

PARISH

OF

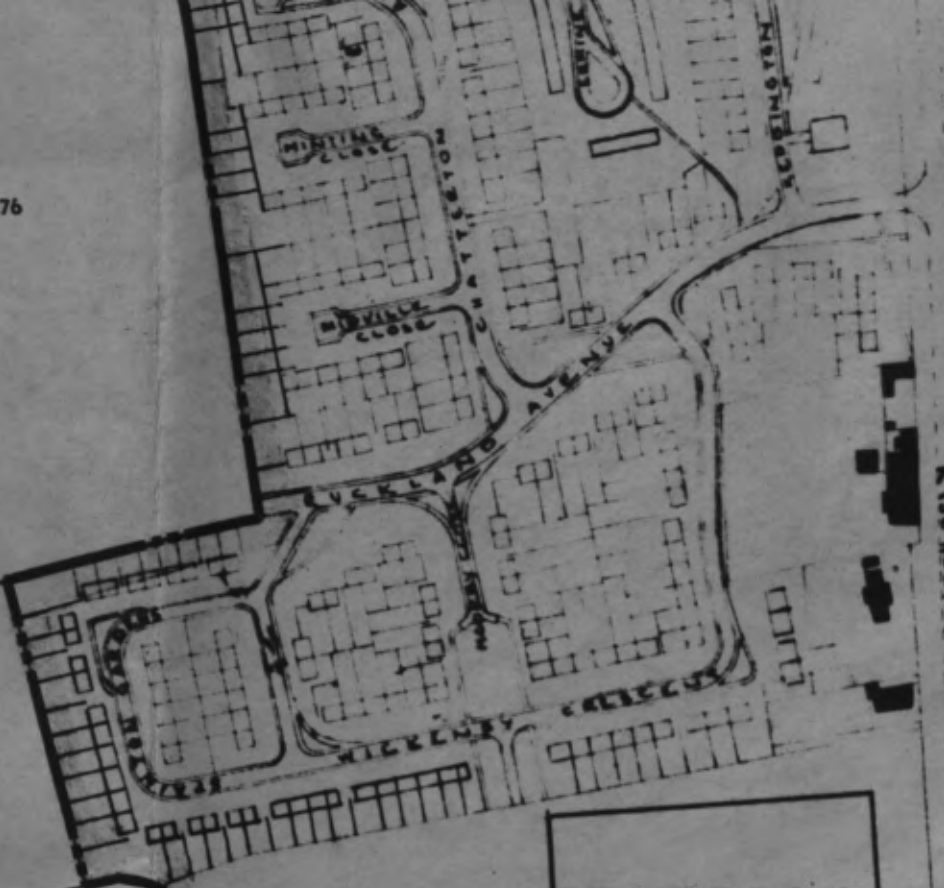
ST. NICHOLAS

WITH ST J

LINCOLN



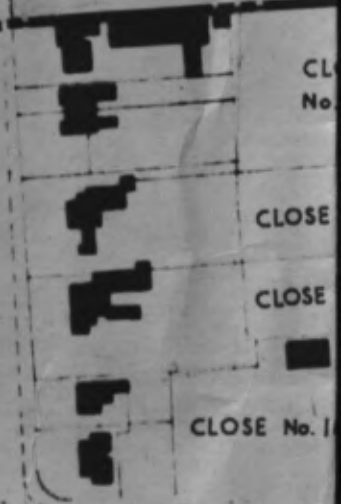
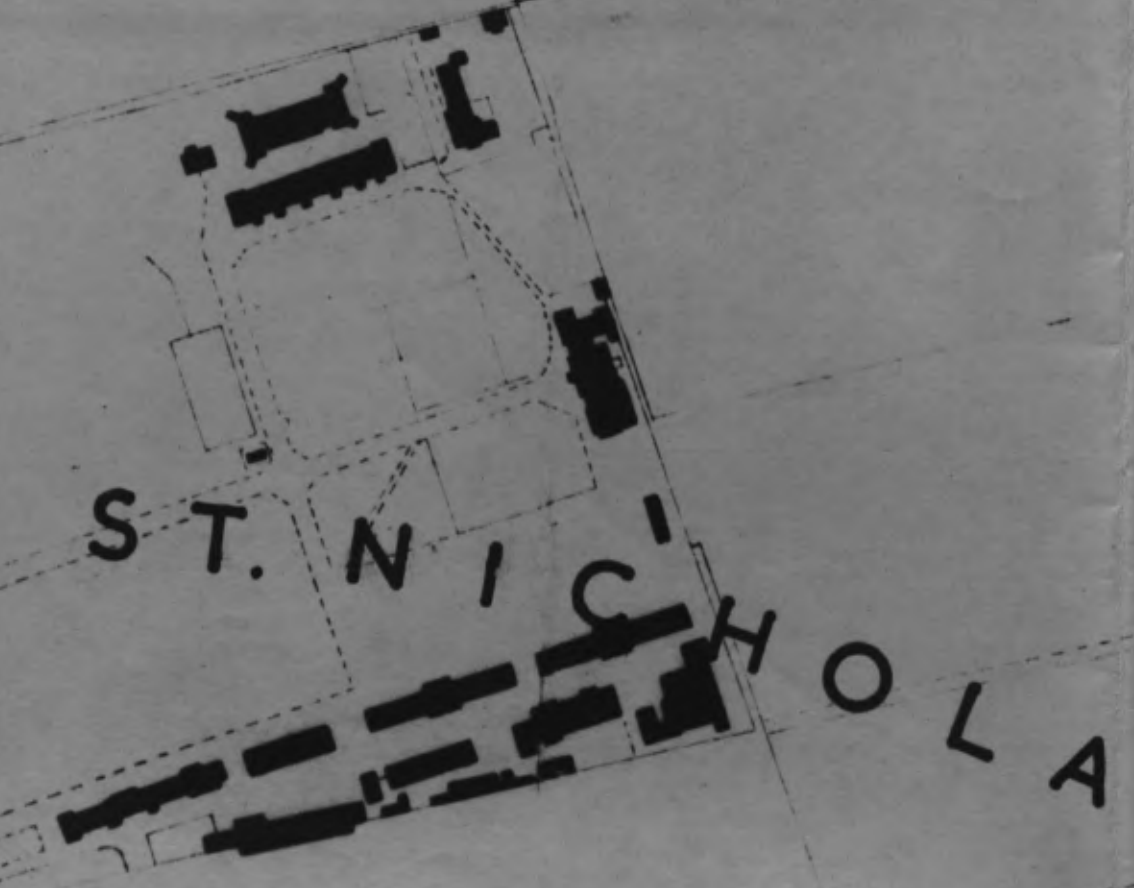
CLOSE No. 176



SITE FOR GIRLS SECONDARY SCHOOL

CLOSE No. 180

CLOSE No. 181



ST. MATTHIAS

Map of
THE DISTRICT OF
ST. JOHN THE BAPTIST,
LINCOLN.

-1960-

SCALE ~ 1/2500

P A R

L I N C O L N

B U R T O N

S T . V I N C E N T ,

P A R I S H

O F

P A R T

O F

T H E

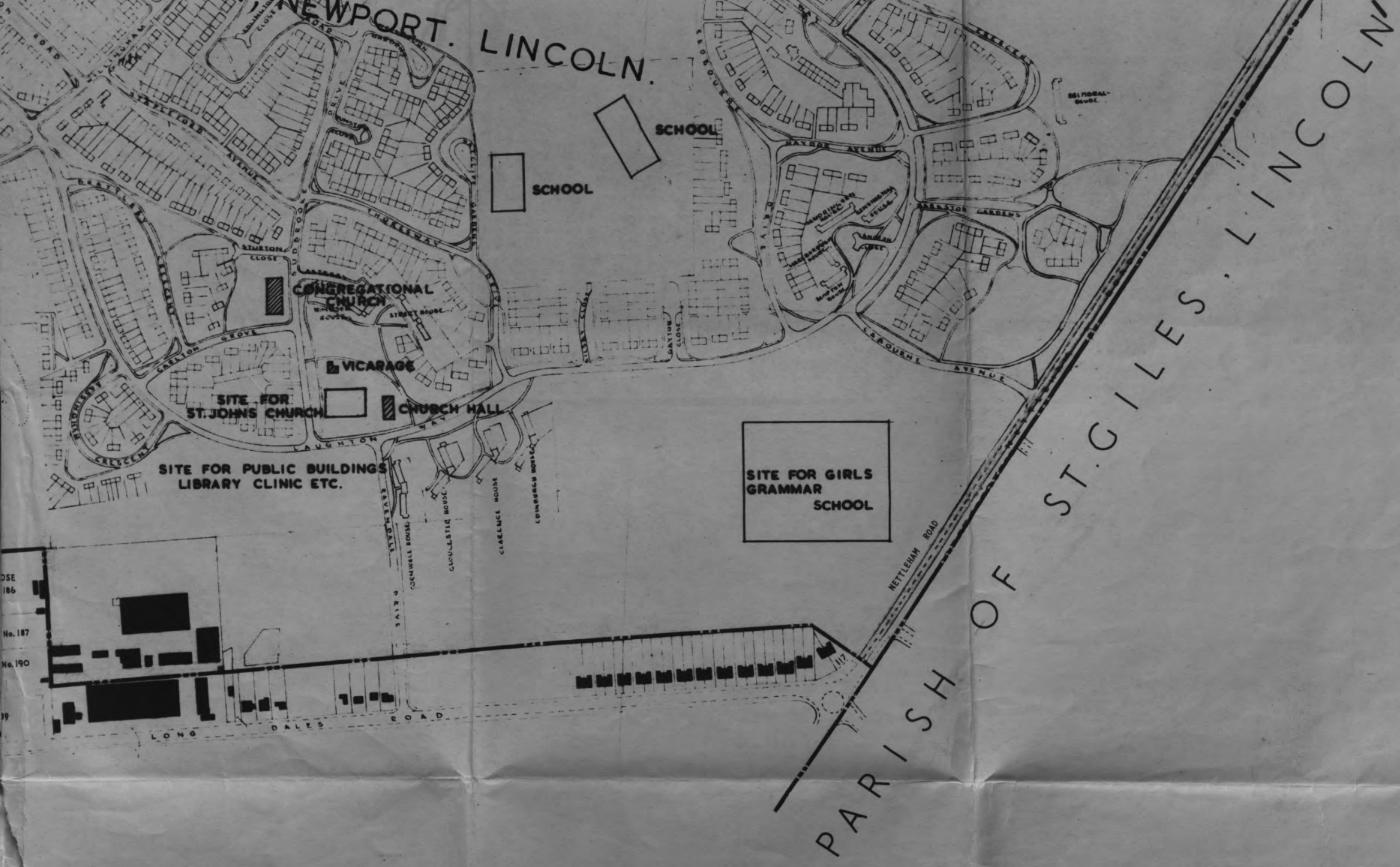
P A R I S H

O F

S T

N I C H O L A S





HN, NEWPORT,
N.

LR

LR

← A1 →

S H O F R I S E H O L M E P A R I S H O F N E T T L E H A M

